

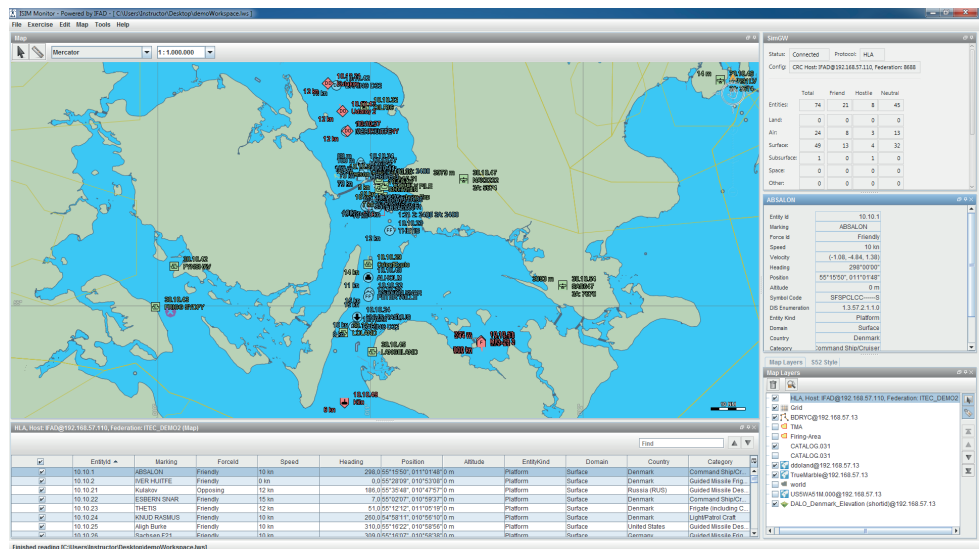
ISIM Monitor



The ISIM Monitor is a general purpose DIS/HLA monitor used to provide situational awareness of simulation networks based on the Distributed Interactive Simulation (DIS) and High Level Architecture (HLA) standards for run-time simulation scenario data exchange.

The ISIM Monitor is designed as modern C2 system with Windows look and feel, a situation display with map layers and military symbols, entity table and expanded entity panes.

The ISIM Monitor provides common functionalities for all IFAD's Instructor systems and the INTS Tactical Console and Tactical Display systems.



Functions

- Display of simulated exercise
- Maps & overlays
- Network status and overview
- Entity table and property pane

Situation Display

- Map layers: vector, raster and elevation
- Sea charts: S-57 and S-63 with S-52 style pane
- Formats: KML, Shape, DTED, GeoTIFF, ECW, ...
- Various 2D and 3D projections
- MIL symbols: APP6B
- Map server support and local GIS files

ISIM Monitor



DIS/HLA connectivity

- HLA 1516-2010 (Evolved)
- HLA 1516-2000
- HLA 1.3
- RPR 2 draft 17 (modular and monolithic)
- Several RTI's
- DIS version 6 (IEEE 1278.1a-1998)

The default configuration for HLA is HLA Evolved, Pitch pRTI and RPR FOM 2 draft 17. Other FOM and DIS versions are available on request.

System Requirements

- Intel Core i3 or better
- GPU: OpenGL 2.0, 512 MB (Nvidia 1 GB recommended)
- RAM: 4 GB
- OS: Windows or Linux (64 bit recommended)