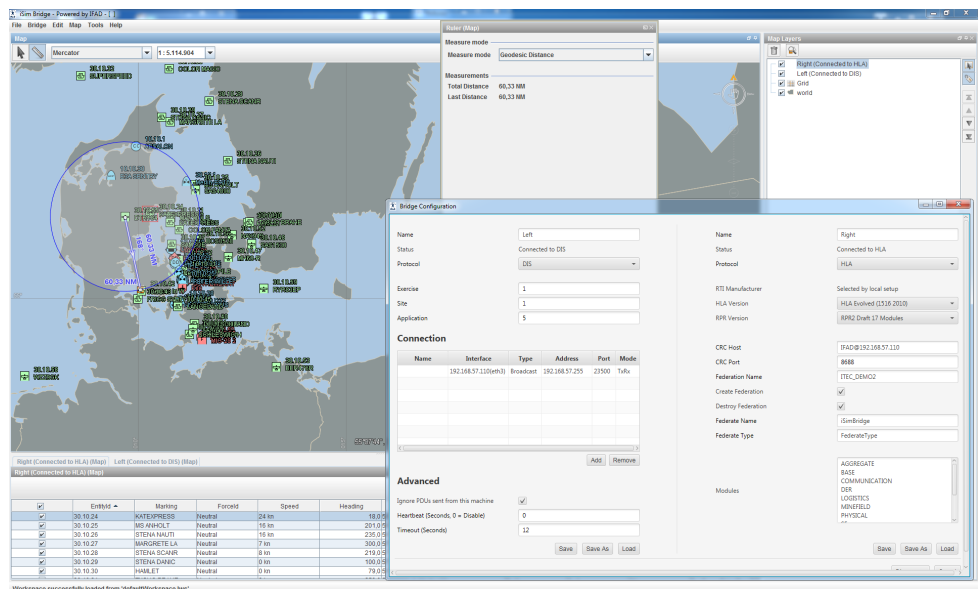


# ISIM Bridge



The ISIM Bridge provides bidirectional bridging for DIS and HLA based simulation networks. The ISIM Bridge supports DIS-DIS, HLA-HLA as well DIS-HLA bridging. Each side of the bridge is individually configurable with respect to DIS and HLA settings as well as physical network interface.

The ISIM Bridge is based on the ISIM Monitor with a modern Windows look and feel and a situation display with map layers and military symbols, entity tables and expanded entity panes.



## DIS-DIS

Gateway between DIS exercises including DIS broadcast, multicast and unicast protocol translation

The DIS-DIS bridge is ideal for connecting DIS simulations through routers and firewalls, connecting DIS simulators through Wide Area Networks or as a unicast-unicast application level firewall in boundary protection solutions.

The DIS-DIS bridge supports SISO Link-11 and Link-16 BOM extensions in addition to the standard DIS PDU's.

## HLA-HLA

Gateway between HLA federations including different HLA versions, RTI's and RPR FOM 2 variants.

The HLA-HLA bridge is ideal for connection HLA federations using different FOM variants, HLA versions or RTI's.

# ISIM Bridge



## *DIS connectivity*

- DIS version 6 (IEEE 1278.1a-1998)
- SISO Link-11 BOM
- SISO Link-16 BOM

## *Supported PDUs*

- Entity State, Environmental Entity
- Fire, Detonation
- Start/Resume, Stop/Freeze, Acknowledge
- Electromagnetic Emission, Radar, Jammer, IFF
- Designator
- Transmitter, Receiver, Signal
- IFF/ATC/NAVAIDS

## *HLA connectivity*

- HLA 1516-2010 (Evolved)
- HLA 1516-2000
- HLA 1.3
- RPR 2 draft 17 (modular and monolithic)
- Several RTI's

The default configuration for HLA is HLA Evolved, Pitch pRTI and RPR FOM 2 draft 17. Other RPR based FOM's and DIS versions are available on request.

## *System Requirements*

- Intel Core i3 or better
- GPU: OpenGL 2.0, 512 MB
- RAM: 4 GB
- OS: Windows or Linux (64 bit recommended)